



Jet Park CLUB

REWARDS PROGRAMME

Join Our Jet Park Club

For those of you who travel often, we're pleased to offer you a good reason to stay with us each time- our new Jet Park Club which offers you 10% of your bill in reward dollars each time you stay. Rewards dollars can be redeemed for future stays.

Simply ask our reception if you would like to join up or find out more.

YOUR BENEFITS:

- 10% Back to You- on your total spend (spend \$100, get \$10 Reward Dollars).
- First to Know- about specials and promotions.
- Exclusive Offers- just for our Jet Park Club members.
- Regular Updates- receive regular news and points balance updates.
- One of Us- you're part of the hotel's family, we'll get to know you so you always feel at home.
- Simple- no cards, no programme charges and easy redemption!

NEWS FLASH- Jet Park Hotel Named Award Finalists!



We have been named finalist for the South Auckland Business Awards in the category of 'Excellence in Social Responsibility and Sustainability'. Winners will be announced at a black tie function on the 27th September 2013.



4 out of 4- Finalists in all categories entered!

The team at Jet Park Hotel are excited and pleased to announce that we have been chosen as national finalists for:

- Best Accommodation Hotel
- Excellence in Customer Service
- Excellence in Marketing and
- Best Environmental, Sustainable and Ethical Practice.

Presentations will be made to national finalists and the category winners at the formal black tie Lion Awards for Excellence Dinner, to be held at the Millennium Hotel in Queenstown, on Thursday 26th September. A Supreme overall winner will also be announced and a trophy presented.



Outstanding Service

**Have you noticed staff wearing an "I-Care" badge?** We believe that a hotel cannot be all it should be without offering a unique, personal, and local-focussed service. We engender passion for hospitality in our staff and are well recognised by our guests for succeeding in truly great service.

**We currently rank 2nd on Trip Advisor for the airport area hotels and in the top 10 business hotels for all Auckland!**

Dining- Any Which Way You Like.



White chocolate panna cotta

We understand that travellers need a range of dining options- sometimes a leisurely meal to celebrate the start of your holiday, other times to snuggle up in your room with some "comfort food". Our menus offer flexible options for dining no matter what time of the day. On offer are a lounge bar snack menu, kids menu, current pizza/ mulled wine special, quick lunches, room service, all day and late night dining, and a superb a la carte menu.

Back by popular demand is the 2 or 3-course set menu, from \$50 per person for 2 courses. To view our current 2 or 3-course set menu, wood-fired pizza or mulled wine special, or our Dine Guide from August until September, simply ask our friendly restaurant staff.

August - September 2013



FREE Valet Car Parking!

If the car park is full, just drive to the front entrance, park in the 'Concierge carpark', hand over your keys into the Concierge and it's all taken care of!



In our lounge bar and lobby areas. See bar staff or reception for your code.

Follow Us...



For all our latest news, offers and photos search 'Jet Park Hotel' or view: [www.jetpark.co.nz/blog](http://www.jetpark.co.nz/blog)



Proud to be a major sponsor of SPCA Auckland





## Jet Park Hotel's Environmental, Sustainable and Social Care Initiatives

Dear valued Guests

Welcome and thank you for choosing to stay at Jet Park Hotel - a great choice in "Best environmental practice". We believe in protecting our beautiful New Zealand environment for future generations, so we developed an environmental plan. Awarded a Qualmark GOLD-Enviro rating in 2011 and 2012; a testament to the fact that the environmental health of our country and our planet for future generations is something we take very seriously. We welcome your feedback on our environmental or social policies. Please use the in-room guest comment cards.

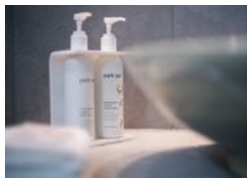
### Responsible Tourism Initiatives

Jet Park Hotel has **over 60 Responsible Tourism Initiatives**; of particular note:

- Energy saving by turning off lights when guests are away from their rooms
- Replacement to energy efficient light bulbs wherever possible
- Solar heating panels for hot water energy efficiency
- Herb and vegetable gardens on-site
- Rubbish/recycling of waste ie. Recycling food waste into compost, containers, paper
- Water savings measures including flow restrictors
- Eco-friendly Park Spa amenity range (low allergy/ NZ made)
- Continual 'audits' aimed at future reductions in power consumption

### Room Key Cards

These are designed to control the lights in your room – so that when you're out, lights are off to save power. You may wish to consider turning off your TV and heating/cooling too, when not in the room. We have installed a number of power- saving low-energy use lights.



### "Park Spa" Amenity Range

We are pleased to supply you with a low-allergy, NZ made body product range made from Green Tea with the healing properties of NZ Manuka. We have created our own product dispensers for some of our range to reduce daily waste from small, individualised plastic containers. Our hair products and soap are still available in individual containers and these are recycled after use.

### Water

Water is precious – even in a country where it rains so much! Flow restrictors have been introduced to our shower heads to save both water and gas used for heating. Our toilets also use less water for flushing than other systems. We have also planted native trees and mulched our gardens to reduce the need for garden watering. You may wish to help save water by turning off the tap tightly and avoiding leaving water running. If you are staying with us for several days, please feel free to decline a towel change from our housekeepers.

### Rubbish and Recycling

Systems are in place to ensure that our waste is separated and as little as possible ends up in waste disposal. We separate paper, recyclable materials, and cardboard, as well as much of our compostable food waste from our general rubbish. Please feel free to leave your recyclable waste in your room next to the bin to be included with our recyclable waste.

### Our Unique Local Environment



If you have some spare time during your stay, you may wish to explore some of the unique volcanic areas and historic Maori settlement sites located a short drive from the hotel. These include Mangere Mountain, Ambury Park, and the Otutaua Stone Fields. **For maps and transport- see reception.**

We have planted the hotel grounds in predominantly native vegetation – Flax, Cabbage Trees, Manuka and Kowhai. These attract native bird life to the site and create a small 'green belt' in a fast-developing industrial area. Please feel free to enjoy a stroll around our grounds!



### Did You Know?

The kokako is one of NZ's endangered and endemic (that is, found only in New Zealand) birds (650 pairs left @ Nov 2012). A joint project between the Auckland City Council and Department of Conservation, The Kokako Project was created to protect and save the kokako. Jet Park Hotel is proud to be a part of this project.

### How Can I Help?

Did you know you can help us to look after the beautiful landscapes that are New Zealand? Please leave any recyclable waste e.g. paper, newspaper, magazines, any glass or plastic bottles beside the bin in your room to be included in our recycling system.



### JET PARK HOTEL ENVIRO AWARDS:

**2013:** Hotel Industry Environmental Initiative Award

Westpac Auckland South Business Awards 2013 Finalist - Excellence in Social Responsibility and Sustainability

**2012:** Hospitality Association of New Zealand Finalist - Best Environmental, Sustainable and Ethical Practice

**2011:** Qualmark Enviro-GOLD award.



100% NZ OWNED  
& OPERATED

[www.jetpark.co.nz](http://www.jetpark.co.nz)

### 'Bed & Board' Sponsorship of SPCA Auckland

"SPCA is a cause close to our hearts, and has long been the chosen charity of Jet Park Airport Hotel & Conference Centre," says owner, Liz Hermann. We began supporting the SPCA the same time as Jet Park Hotel's opening back in 1998. The relationship has gone from strength to strength, and since 2012 has been a major 'Bed and Board' sponsor of the SPCA Auckland.

