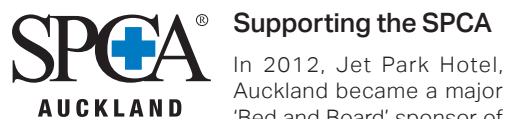


SOCIAL & ENVIRONMENT

JET PARK HOTELS' CHARITIES OF CHOICE



Supporting the SPCA
In 2012, Jet Park Hotel, Auckland became a major 'Bed and Board' sponsor of the SPCA Auckland. With the inclusion of a functional Education Centre at the SPCA Auckland, we are happy to refer clients to their Conference Centre when we are fully booked and vice versa.

Kokako Bird Conservation

Jet Park Hotel, Auckland is involved in the conservation of New Zealand's endangered Kokako bird in the Hunua Ranges. We work along-side Auckland Council and "Friends of Hunua Ranges".

Women's Refuge

Jet Park Hotel, Auckland also supports Women's Refuge with donations of good used clothing and useful household items and furniture.

RESPONSIBLE TOURISM INITIATIVES

Jet Park Hotel has over 60 Responsible Tourism Initiatives; of particular note:

- Energy saving by turning off lights
- Energy efficient light bulbs (LED)
- Solar heating panels for hot water
- Eco-friendly Park Spa amenity range
- Water saving measures, e.g. flow restrictors, low flush toilets
- Rubbish/recycling of waste, e.g. recycling food waste into compost, paper, glass
- Continual 'audits' aimed at future reductions in resource consumption



ENVIRO FRIENDLY PARK SPA AMENITY RANGE

We are pleased to supply you with a low-allergy, **NZ-made body product range** made with the healing properties of NZ 'Mamaku' (Black Fern). We have created our own product dispensers for some of our range to reduce daily waste from small, individualised plastic containers. Our hair products and soap are still available in individual containers and these are recycled after use.

Other Benefits:



- Hair care products are all made using bio-degradable formulations, are free from animal and petrochemical by-products and are Paraben free
- Hair & skin care products are made from sustainably sourced, GE free ingredients
- Cardboard boxes are made from 100% recycled, oxygen bleached carton board
- Caps and bottles are fully recyclable and partially used soaps are returned to the manufacturer to be recycled into biofuel and bio-degradable industrial cleaning compounds
- Formulations are tested on humans, not animals!

HOW CAN YOU HELP?



You may wish to help save water by turning off the tap tightly and avoiding leaving water running.



If you are staying with us for several days, please feel free to decline a towel change from our housekeepers.



Please leave any recyclable waste e.g. paper, newspaper, magazines, any glass or plastic bottles beside the bin in your room to be included in our recycling system.



Room key cards: These are designed to control the lights in your room, so that when you're out, lights are off to save power. You may also wish to consider turning off your TV and heating/cooling too, when not in the room.



If you're walking on New Zealand's beautiful trails/bush walks, always wear clean shoes and use shoe spray stations to prevent the spread of 'Kauri Die Back Disease'.

OUR UNIQUE LOCAL ENVIRONMENT



Mangere Mountain

If you are planning to stay in Auckland and have some spare time during your stay, you may wish to explore some of the unique volcanic areas and historic Maori settlement sites located a short drive from Jet Park Hotel, Auckland. These include Mangere Mountain, Ambury Park, and the Otuaataua Stone Fields. **For maps and transport- see Reception.**



Otuaataua Stonefields

Jet Park Times

Established since 1998

To our dear valued guests...

Welcome to Jet Park Hotel Auckland. We hope you enjoy your stay! Should you require anything at all, please contact Reception from your room - Simply dial 0. If you are travelling to Rotorua this year, we'd love you to be our guest at Jet Park Hotel Rotorua. Centrally located, 5mins from Rotorua town center, we are ideally situated for you to enjoy the many exciting activities the region has to offer!

If you have any feedback that will help us improve our guest services or facilities, please feel free to fill out either our online guest feedback survey that you will receive after your stay; alternatively there is a survey form in your room- it takes just a few minutes, and we really appreciate your time! We also encourage you to place feedback on TripAdvisor- there's a link on both our Auckland and Rotorua websites, if you go to "About Us" and then click on "Guest Feedback" or directly on TripAdvisor.

Until next time, happy travels and good health!

Warm regards,
The Jet Park Hotel Team



JET PARK HOTEL TURNS 19!!



From our humble beginnings in 1998 as a 90 room property, Jet Park Hotel now boasts 222 guest rooms, a 250 person conference centre and an award winning restaurant.

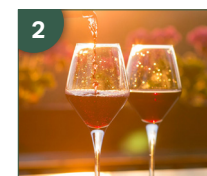
Thank you for all the love and support. We continue to be committed to caring for our guests, our environment, our staff and our community.

CONTINUED ON PAGE 3...

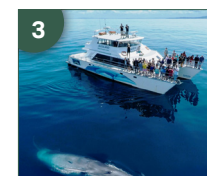
TOP 10 THINGS TO DO WHILE IN AUCKLAND



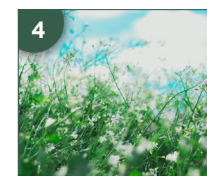
A region of diverse landscapes, Auckland has a multitude of walking tracks to suit. **Otuaataua Stone Fields** or **Mangere Mountain** are close to the hotel.



Close to the hotel is world-renowned **Villa Maria winery**. Treat yourself to an a la carte meal in Te Maroro Restaurant, and sample the fine range of Villa Maria wines?



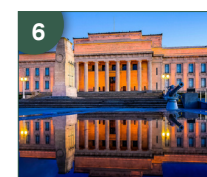
Discover beautiful **Hauraki Gulf** and it's Islands - golden sand beaches. Try sailing, kayaking, or dolphin spotting, to name a few.



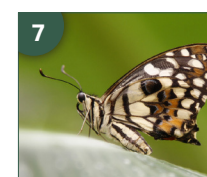
Check out **Auckland Botanical Gardens**; unique gardens and landscapes with a distinctive South Pacific flavour.



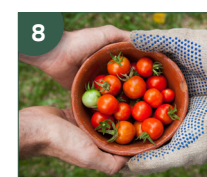
For the bargain hunter, you can't go past **Dress Smart** outlet in Onehunga (15 mins from hotel).



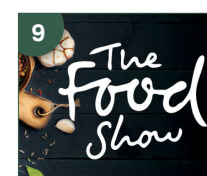
Immerse yourself in art and culture at the **Auckland City Art Gallery**, **Auckland Museum** or **NZ Maritime Museum**.



Traveling with family? Fun things to do are at the hotel's doorstep - **Butterfly Creek**, **Ambury Farm** and **Rainbow's End**, plus more.



Enjoy Auckland's bustling markets- check out **Clevedon Farmer's Market** (30 mins south of hotel) or **Victoria Park Market** in the CBD.



Discover local and international food, wine, beer, coffee and much more. Don't miss the **Food show at ASB Showgrounds**. 27th Jul - 31st July 2017



Short on time? **Jet Park Hotel** features some wonderful **art and sculptures**. Ask at our Front Desk for our **art tour brochure**.

Jet Park Airport Hotel and Conference Centre
63 Westney Road, Mangere, Auckland 2022
Ph: +64 9 275 4100

Jet Park Hotel Rotorua
237 Fenton Street, Rotorua 3010
Ph: +64 7 350 2211

Follow Us



Reservations Freephone 0800 538 466 • reservations@jetpark.co.nz • Book Online: jetpark.co.nz | jetparkrotorua.co.nz



DINE WITH US

NEW EXECUTIVE CHEF AT JET PARK HOTEL, AUCKLAND AIRPORT



New Zealand Chef of the Year 2011 & 2012. Jet Park Hotel Auckland is pleased to announce the appointment of **David (DG) Schofield** in the role of Executive Chef, who joins a talented Kitchen team.

David is passionate about artisan producers and believes that the standard of the produce in New Zealand equals and often exceeds the produce being offered in Europe, Asia and a vast majority of the world. He is great believer in what are now tagged "heirloom" or "original" strains of vegetables and is an advocate

for good welfare standards when it comes to the rearing of livestock. His style would best be described as honest and straightforward with seasonal produce taking centre stage.

He loves sweet and sour / hot and cold pairings as well as matches from different cuisines. Although a convert to some of the science of "molecular gastronomy", he continues to believe that the taste and texture of natural products can always be embellished but should not be diluted.



HEARTY DINING OPTIONS!

At any time of day or night we have a menu offering to suit your needs. For a dining experience not to be missed, try our delicious a la carte dinner menu, or alternatively, we offer superb blackboard specials and great value shared plates at Indaba Bar. Our menus can be found at the back of your in-room compendium. We also offer late night snacks from 11pm until 5am.

To reserve a table, contact the Restaurant by dialing 8995 from your room. Enjoy!

*Pull up a chair,
take a taste,
come join us.
life is so endlessly
delicious!*

— RUTH REICHL —

HAVE YOU TRIED OUR EXPRESS BREAKFAST?



Available in our Indaba Lounge Bar from 5am until 10am, our new Express Breakfast is a delicious way to start the day if you need to catch early flights or are short on time.

For just \$15 per person, enjoy a selection of fruit juices, yoghurt, granola and fresh fruit; a selection of cereals - toast, muffins and croissants with preserves and condiments, plus freshly brewed tea and coffee. Yum!



NEW ART BY REX HOMAN

Have you seen our new art installation in Te Maroro, upper restaurant?

Rex Homan, an award winning local sculptor is responsible for creating all the beautiful fish sculptures throughout the hotel and two significant pieces for our Rotorua Hotel. One of our most iconic pieces of his work is the amazing fish wall which can be seen in the main lobby at reception in the main hotel.



Rex has created wonderful sculptures for the new conference centre, which includes Te Kokako (an endangered native bird) that has been carved from authentic New Zealand Swamp Kauri & Te Hokioi (Haast Eagle) which is made out of driftwood from beaches in the Bay of Plenty and can be seen on the ground floor in the main lobby in the conference centre.



Rex Homan with his creation, Flight of the Godwits



Haast's Eagle

NEWS, PRODUCT OFFERS & UPDATES

MEET OUR NEW RESERVATIONS YIELD MANAGER, MAVAE

Mavae Lavemaau heads up our friendly Reservations team, has worked in hospitality all her working life and says, "I enjoy meeting and dealing with guests and customers from all over the world, and all walks of life... I love the fact that you never stop learning."

Mavae's professionalism, experience and expertise is a welcome addition to the Jet Park Hotel team.



MOVERS & SHAKERS, JET PARK HOTEL ROTORUA

We are pleased to announce that Inus Rademeyer has accepted the role of Hotel Manager at Jet Park Hotel Rotorua. He has been part of our Jet Park Hotel Auckland teams in various roles over the years including all Front Office positions, Reservations, Marketing, CRM, and assisting with the opening of Jet Park Hotel Rotorua in 2015.

We welcome Inus to the Rotorua team and look forward to seeing Jet Park Hotel Rotorua go from strength to strength.



JET PARK HOTEL TURNS 19!!



From left : Rina Kumari (10 yrs service), May Heather (19 yrs service), Muni Ratnam (19 yrs service), Liz - Director, Jeeva - General Manager, Sela Liku (19 yrs service), Lorna Masoe (10 yrs service)

Jet Park Hotel's 19th birthday was celebrated on 3rd July with a special lunch and staff long-service awards ceremony held to acknowledge and thank those staff who have served the hotel for many years. In the hospitality industry, it's a huge milestone for staff members to have reached 5+ years, 10+ years, and 15+ years' service.

Did you know? Over 41% of our staff have been with us for more than 2 years, and 25% over 5 years - these are great statistics in an industry that generally has high staff turnover.

OUR PAST, PRESENT AND FUTURE

Jet Park Hotel, formerly known as "Jet Inn" was opened in June 1998. The hotel has grown in several stages; beginning with a 90 room property, then in July 2004 the addition of 40 deluxe rooms and then in August 2008 a further 40 deluxe rooms and 3 apartments were added. In 2015, the hotel embarked on exciting expansion to a new property in Rotorua and completed a further extension with the construction of a 250-person conference centre, plus 60 new guest rooms in Auckland which opened in July 2016.

We aim to operate an ethical business in the Hotel sector offering products and services that provide value for money, quality, exceptional service and consistency. We hope that you will continue to visit us in the years to come, and that this hotel, if not already, will become the place you return to time and time again during your journeys.



JET INN, 1998



JET PARK HOTEL AND CONFERENCE CENTRE, 2016



JET PARK HOTEL ROTORUA, 2015

ROTORUA WINTER DEAL- STAY 3, PAY 2!



Need a winter getaway in Rotorua? Simply Book Direct with us for stays from Sunday - Thursday, from 01 May - 30 September 2017. If you stay for 3 nights, you only pay for 2!

Freephone 0800 538 466 or +64 9 275 4100, email: reservations@jetpark.co.nz or book via our website. Subject to availability and excludes dates: 7-24 July 2017. This offer does not apply to negotiated rates.



GET REWARDED FOR STAYING WITH US!

Did you know that by simply joining up with our Loyalty Rewards Programme, you instantly get 10% back to you on your total spend i.e. spend \$100 and get \$10 Reward Dollars. These can be used next time you stay with us on accommodation, goods or services. You'll also receive exclusive offers, and the VIP treatment whilst in-house!

Sign-up is done through Reception- It takes just a few minutes, and you're set to start receiving the benefits of staying with Jet Park Hotels! And remember, you can use your reward dollars at our sister property in Rotorua.