



Dear Hotel Guest,

We hope the last few months have been as busy and successful as ours- we're excited to share with you news of the string of awards we've won this year, refurbishments to 40 of our rooms, and some great accommodation and dining offers- perfect for any travels you're planning over the remainder of the year!

Also, if you haven't joined our Jet Park Club rewards programme- please enquire at reception to sign up for fantastic savings.

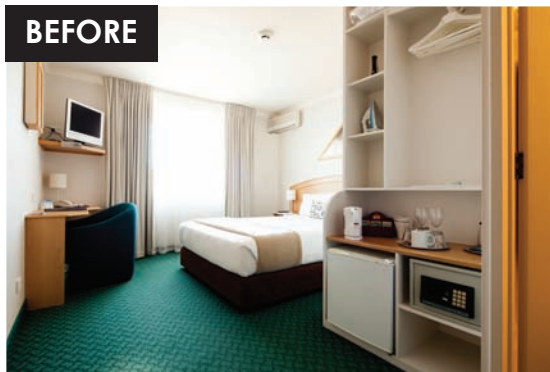
Until next time, we wish you happy travels and good health!

The Jet Park Hotel Team



Follow Us:
For all our latest news & offers search 'Jet Park Hotel' or view: www.jetpark.co.nz/blog

Overnighter Rooms Receive Complete Makeover



Our ever popular and longest standing rooms- 40 Standard Queens have received a full refurbishment. The rooms feature new furniture, headboards, light fittings, carpets, throws and cushions together with a wall-mounted 32 inch LED flat screen television.



Our Management Team at Westpac Auckland South Business Awards 2013

Jet Park Hotel's Winning Streak!

Hospitality is at the heart of every team member at the Jet Park Hotel and the passion and hard-work have paid off for Jet Park Hotel in 2013; the hotel has been recognised in a wide range of award forums for the excellence it delivers on many levels. This is a truly outstanding achievement for a stand-alone hotel property in the face of many other competitor "chain hotel". There's something to say for having a unique character and business approach!

Jet Park Hotel has been recognised recently with the following awards-

- Winner 2013 South Auckland Business Awards for Social Responsibility and Sustainability.
- Hospitality Association of NZ 2013 National Finalist (top 3) for Best Hotel, Best Customer Service, Best Marketing, and Environmental Initiatives.
- Hotel Industry Award 2013 for Environmental Initiatives.
- NZ Culinary Fare 2013- Staff Awarded NZ Commis Chef of the Year (Anja Sunnus) and Young Sommelier of the Year (Minnie Gao).
- 2013 Trip Advisor Excellence Award.
- Beef and Lamb New Zealand "People's Choice" Award 2013 for the hotel's Te Maroro Restaurant.

New Summer Menu & New Look

We invite you to dine with us and sample tasty new dishes from our Summer Menu at the award-winning, newly refurbished Te Maroro Restaurant. Alternatively why not try pizzas in the bar, or a pool-side BBQ. Our new menus launch on 6th November!



October - November 2013



FREE Valet Car Parking!

If the car park is full, simply drive to the front entrance, park in the 'Concierge carpark', hand over your keys into the Concierge and it's all taken care of!



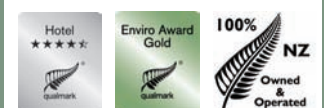
In our lounge bar and lobby areas. See bar staff or reception for your code.



ENQUIRE NOW AT RECEPTION



Proud to be a major sponsor of SPCA Auckland





Jet Park Hotel's Environmental, Sustainable and Social Care Initiatives

Dear valued Guests

Welcome and thank you for choosing to stay at Jet Park Hotel - a great choice in "Best environmental practice". We believe in protecting our beautiful New Zealand environment for future generations, so we developed an environmental plan. Awarded a Qualmark GOLD-Enviro rating in 2011 and 2012; a testament to the fact that the environmental health of our country and our planet for future generations is something we take very seriously. We welcome your feedback on our environmental or social policies. Please use the in-room guest comment cards.

Responsible Tourism Initiatives

Jet Park Hotel has **over 60 Responsible Tourism Initiatives**; of particular note:

- Energy saving by turning off lights when guests are away from their rooms
- Replacement to energy efficient light bulbs wherever possible
- Solar heating panels for hot water energy efficiency
- Herb and vegetable gardens on-site
- Rubbish/recycling of waste ie. Recycling food waste into compost, containers, paper
- Water savings measures including flow restrictors
- Eco-friendly Park Spa amenity range (low allergy/ NZ made)
- Continual 'audits' aimed at future reductions in power consumption

Room Key Cards

These are designed to control the lights in your room – so that when you're out, lights are off to save power. You may wish to consider turning off your TV and heating/cooling too, when not in the room. We have installed a number of power- saving low-energy use lights.



"Park Spa" Amenity Range

We are pleased to supply you with a low-allergy, NZ made body product range made from Green Tea with the healing properties of NZ Manuka. We have created our own product dispensers for some of our range to reduce daily waste from small, individualised plastic containers. Our hair products and soap are still available in individual containers and these are recycled after use.

Water

Water is precious – even in a country where it rains so much! Flow restrictors have been introduced to our shower heads to save both water and gas used for heating. Our toilets also use less water for flushing than other systems. We have also planted native trees and mulched our gardens to reduce the need for garden watering. You may wish to help save water by turning off the tap tightly and avoiding leaving water running. If you are staying with us for several days, please feel free to decline a towel change from our housekeepers.

Rubbish and Recycling

Systems are in place to ensure that our waste is separated and as little as possible ends up in waste disposal. We separate paper, recyclable materials, and cardboard, as well as much of our compostable food waste from our general rubbish. Please feel free to leave your recyclable waste in your room next to the bin to be included with our recyclable waste.

Our Unique Local Environment



If you have some spare time during your stay, you may wish to explore some of the unique volcanic areas and historic Maori settlement sites located a short drive from the hotel. These include Mangere Mountain, Ambury Park, and the Otutataua Stone Fields. **For maps and transport- see reception.**

We have planted the hotel grounds in predominantly native vegetation – Flax, Cabbage Trees, Manuka and Kowhai. These attract native bird life to the site and create a small 'green belt' in a fast-developing industrial area. Please feel free to enjoy a stroll around our grounds!



Did You Know?

The kokako is one of NZ's endangered and endemic (that is, found only in New Zealand) birds (650 pairs left @ Nov 2012). A joint project between the Auckland City Council and Department of Conservation, The Kokako Project was created to protect and save the kokako. Jet Park Hotel is proud to be a part of this project.

How Can I Help?

Did you know you can help us to look after the beautiful landscapes that are New Zealand? Please leave any recyclable waste e.g. paper, newspaper, magazines, any glass or plastic bottles beside the bin in your room to be included in our recycling system.



JET PARK HOTEL ENVIRO AWARDS:

2013: Hotel Industry Environmental Initiative Award

Westpac Auckland South Business Awards 2013 WINNER - Excellence in Social Responsibility and Sustainability

2012: Hospitality Association of New Zealand Finalist - Best Environmental, Sustainable and Ethical Practice

2011: Qualmark Enviro-GOLD award.



100% NZ OWNED
& OPERATED

www.jetpark.co.nz

'Bed & Board' Sponsorship of SPCA Auckland

"SPCA is a cause close to our hearts, and has long been the chosen charity of Jet Park Airport Hotel & Conference Centre," says owner, Liz Hermann. We began supporting the SPCA the same time as Jet Park Hotel's opening back in 1998. The relationship has gone from strength to strength, and since 2012 has been a major 'Bed and Board' sponsor of the SPCA Auckland.

