

## A Word From Our General Manager, Jeeva

Dear Friends.

Season's Greetings.

Another year has passed by and we are thankful to all of you for your continued support of the Jet Park Hotel. Tourism has seen some growth in the country in 2014 and we have had our fair share of that growth. For that we are grateful to you. In 2015 we are looking forward to our new project of additional rooms and larger conference facilities. It is exciting times at the Jet Park Hotel. We look forward to being able to serve you even better and offer even more to you, our valued guests.

Have a fantastic summer and we look forward to welcoming you all in 2015. Merry Christmas and a very Happy New Year.

**Jeeva and the Team at Jet Park Hotel**

## Staff Profile- New Executive Chef, Bernard Bernabe



Jet Park Hotel is proud to have on board Bernard who has 20 years' experience in the hospitality industry. Career highlights have included working in 5 star international hotels such as The Hyatt, Sky City Grand

and Hilton worldwide- namely Conrad Singapore, Hilton Auckland, Hilton Sydney, Hilton Niseko Japan and Hilton Kuala Lumpur. Naturally, Bernard has had the privilege of working alongside some the "most amazing chefs of the world" including Gordon Ramsay, Jamie Oliver, Michel Roux, Peter Gordon and many more, "...Whom I respect and admire for their great talent and passion for the industry."

With regards to his 'cooking style', Bernard states; "My style of cooking is 'Classical Modern French', which means using classic cooking techniques with modern interpretation. I'm 'classical French' trained as a chef, but I like to harmonise textures and flavours from great products and produce to create a modern dish. New Zealand has great produce and products and I intend to take full advantage of to showcase to our guests."

## Local Attractions

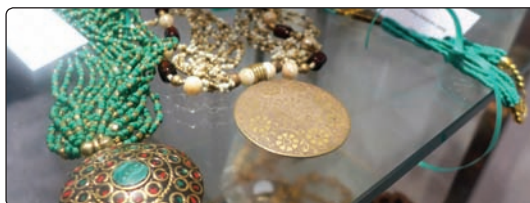


There are many excellent local attractions right on the hotel's doorstep. Traveling with family or as a couple? We have bikes for hire to explore areas such as Ambury Park Farm, Otuatua Stone Fields or Mangere

Mountain to name a few. Other attractions include: Villa Maria winery, Butterfly Creek, Rainbow's End, Auckland Botanic Gardens, or try Dressmart in Onehunga for some retail therapy. **Ask our Concierge for further information.**

## Gift Shop- More Than Meets The Eye

While you are in-house, why not drop by our Gift Shop and take a look at the many lovely items that would make perfect gifts- all at a reasonable cost. Ask at Reception for more information or if you would like to make a purchase.



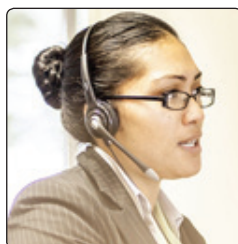
## New Staff Welcomed



### Xanthe Smythe- Business Development Manager

Having recently joined the Sales team, Xanthe is still 'finding her feet' but is excited to be with the Jet Park Hotel team. Highlights have included spending several years

working on super yachts of which; "Exposed me to a whole new level of customer service which I loved." One of Xanthe's career highlights to date includes completing hospitality services successfully at the 2013 Men's Softball World Cup, which "was a hugely satisfying experience". Xanthe's overall philosophy is that every guest is a VIP, is warmly welcomed and treated as such.



### Inez Hiku- Sales and Marketing Assistant

Some of you may know Inez in her current role with the Reservations team. The Sales team are happy to have Inez join them in the New Year helping out

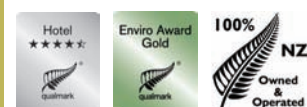
with the many administrative and sales tasks that come with a busy sales and marketing team.

Dec 2014 - Jan 2015



### Frequent Traveler?

Ask Reception to join our loyalty rewards programme



**FOLLOW US:**

[www.jetpark.co.nz/blog](http://www.jetpark.co.nz/blog)



## Jet Park Hotel's Environmental, Sustainable and Social Care Initiatives

Dear valued Guests

Welcome and thank you for choosing to stay at Jet Park Hotel - a great choice in "best environmental practice". We believe in protecting our beautiful New Zealand environment for future generations, and we have developed a plan you can be a part of. Awarded a Qualmark GOLD-Enviro rating in 2011, 2012, 2013 and 2014 - a testament to the fact that the environmental health of our country and our planet for future generations is something we take very seriously. We welcome your feedback on our environmental or social policies. Please use the in-room guest comment cards.

### Responsible Tourism Initiatives

Jet Park Hotel has **over 60 Responsible Tourism Initiatives**; of particular note:

- Energy saving by turning off lights when guests are away from their rooms
- Energy efficient light bulbs
- Solar heating panels for hot water
- Herb garden on-site
- Rubbish/recycling of waste eg. Recycling food waste into compost, containers, paper etc.
- Water savings measures including flow restrictors
- Eco-friendly Park Spa amenity range
- Continual 'audits' aimed at future reductions in power consumption

### Room Key Cards

These are designed to control the lights in your room - so that when you're out, lights are off to save power. You may wish to consider turning off your TV and heating/cooling too, when not in the room. We have installed a number of power- saving low-energy use lights.

### Enviro Friendly Park Spa Amenity Range

We are pleased to supply you with a low-allergy, NZ made body product range made with the healing properties of NZ 'Mamaku' (Black Fern). We have created our own product dispensers for some of our range to reduce daily waste from small, individualised plastic containers. Our hair products and soap are still available in individual containers and these are recycled after use.



#### Other Benefits:

- Hair care products are all made using biodegradable formulations, are free from animal and petrochemical by-products, and are Paraben free.
- Hair & skin care products are made from sustainably sourced, GE free ingredients.
- Cardboard boxes are made from 100% recycled, oxygen bleached carton board.

- Caps and bottles are fully recyclable.
- Formulations are tested on humans, not animals!
- Partially used soaps are returned to the manufacturer to be recycled into Biofuel and biodegradable industrial cleaning compounds.

### Water

Water is precious - even in a country where it rains so much! Flow restrictors have been introduced to our shower heads to save both water and gas used for heating. Our toilets also use less water for flushing than other systems. We have also planted native trees and mulched our gardens to reduce the need for garden watering. You may wish to help save water by turning off the tap tightly and avoiding leaving water running. If you are staying with us for several days, please feel free to decline a towel change from our housekeepers.

### Rubbish and Recycling

Systems are in place to ensure that our waste is separated and as little as possible ends up in waste disposal. We separate paper, recyclable materials, paper and cardboard, as well as much of our compostable food waste from our general rubbish. Please feel free to leave your recyclable waste in your room next to the bin to be included with our recyclable waste.

### Our Unique Local Environment

If you have some spare time during your stay, you may wish to explore some of the unique volcanic areas and historic Maori settlement sites located a short drive from the hotel. These include Mangere Mountain, Ambury Park, and the Otutataua Stone Fields. **For maps and transport- see reception.**

We have planted the hotel grounds in native vegetation including Flax, Cabbage Trees, Manuka and Kowhai. These attract native bird life to the site and create a small 'green belt' in a fast-developing industrial area. Please feel free to enjoy a stroll around our grounds!



### Did You Know?

The kokako is one of NZ's endangered and endemic (that is, found only in New Zealand) birds (650 pairs left @ Nov 2012). A joint project between the Auckland City Council and Department of Conservation, The Kokako Project was created to protect and save the kokako. Jet Park Hotel is proud to be a part of this project.

### How Can I Help?

Did you know you can help us to look after the beautiful landscapes that are New Zealand? Please leave any recyclable waste e.g. paper, newspaper, magazines, any glass or plastic bottles beside the bin in your room to be included in our recycling system.



### JET PARK HOTEL ENVIRO AWARDS:

- 2014:** Hospitality Association of New Zealand Winner - Best Environmental, Sustainable and Ethical Practice
- 2013:** Hotel Industry Environmental Initiative Award Westpac Auckland South Business Awards 2013 WINNER - Excellence in Social Responsibility and Sustainability
- 2012:** Hospitality Association of New Zealand Finalist - Best Environmental, Sustainable and Ethical Practice
- 2011:** Qualmark Enviro-GOLD rating.



**100% NZ OWNED  
& OPERATED**

[www.jetpark.co.nz](http://www.jetpark.co.nz)



**We're proud to be a  
'Bed & Board' Sponsor  
of SPCA Auckland**